

**ICG** **INDOFINE Chemical Company, Inc.**

121 Stryker Lane, Bldg. 30, Suite 1 • Hillsborough, NJ 08844 • U.S.A.

Phone: (908) 359-6778 • FAX: (908) 359-1179

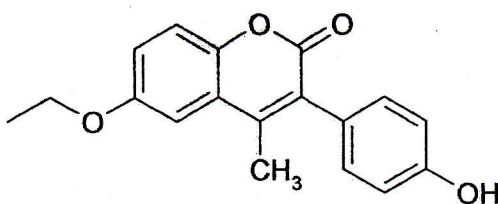
website: [www.indofinechemical.com](http://www.indofinechemical.com)

e-mail: [chemical@indofinechemical.com](mailto:chemical@indofinechemical.com)

**CERTIFICATE OF ANALYSIS**

**CAT. No.: 19-254**

<u>Product Name:</u>	<b>6-ETHOXY-3(4'-HYDROXYPHENYL)-4-METHYLCOUMARIN</b>
<u>Lot Number:</u>	000240
<u>Chemical Formula:</u>	C <sub>18</sub> H <sub>16</sub> O <sub>4</sub>
<u>Molecular Weight:</u>	296.33
<u>Melting Point:</u>	239-242°C
<u>Appearance:</u>	Cream color powder
<u>Solubility:</u>	Soluble in DMSO
<u>TLC:</u>	Hexane:Ethyl acetate (1:1)
<u>Purity (HPLC):</u>	98.75%





# INDOFINE Chemical Company, Inc.

121 Stryker Lane, Bldg. 30, Suite 1 • Hillsborough, NJ 08844 • U.S.A.

Phone: (908) 359-6778 • FAX: (908) 359-1179

website: [www.indofinechemical.com](http://www.indofinechemical.com)

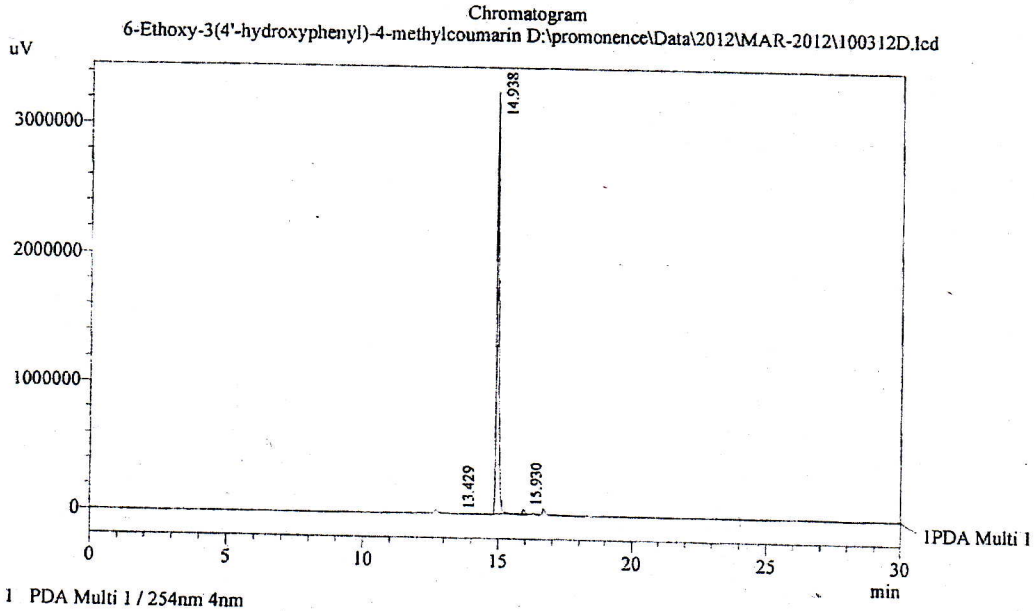
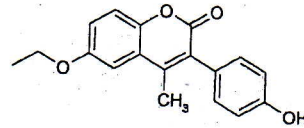
e-mail: [chemical@indofinechemical.com](mailto:chemical@indofinechemical.com)

## HPLC ANALYSIS

Acquired by : Sanjeev  
 Sample Name : 6-Ethoxy-3(4'-hydroxyphenyl)-4-methylcoumarin  
 Sample ID : Lot No:-000240  
 Injection Volume : 20 uL  
 Data Filename : 100312D.lcd  
 Method Filename : Linear Gradient.M.lcm  
 Report Filename : BIOSYN.lcr  
 Date Acquired : 3/10/2012 12:48:12 PM  
 Data Processed : 3/10/2012 1:22:02 PM  
 Column : LUNA C-18(2), (250mm x4.6mm 5.0μ)  
 Flow : 1.000 mL/min.  
 Mobile Phase : A(0.05% TFA in water) B(Acetonitrile)

0.01	90	10
12.0	10	90
20.0	10	90
25.0	90	10
30.0	90	10

Catalog No.: 19-254  
 Product name: 6-Ethoxy-3(4'-Hydroxyphenyl)-4-methylcoumarin  
 Lot No.: 000240



PDA Ch1 254nm 4nm

PeakTable

Peak#	Name	Ret. Time	Area	Area %	Relative Retention Time
1	RT:13.429	13.429	3568	0.02	0.90
2	RT:14.938	14.938	18758239	98.75	1.00
3	RT:15.930	15.930	234123	1.23	1.07
Total			18995930	100.00	

# ICC INDOFINE Chemical Company, Inc.

121 Stryker Lane, Bldg. 30, Suite 1 • Hillsborough, NJ 08844 • U.S.A.

Phone: (908) 359-6778 • FAX: (908) 359-1179

website: [www.indofinechemical.com](http://www.indofinechemical.com)

e-mail: [chemical@indofinechemical.com](mailto:chemical@indofinechemical.com)

Catalog No.: 19-254

Product name: 6-Ethoxy-3-(4'-Hydroxyphenyl)-4-methylcoumarin

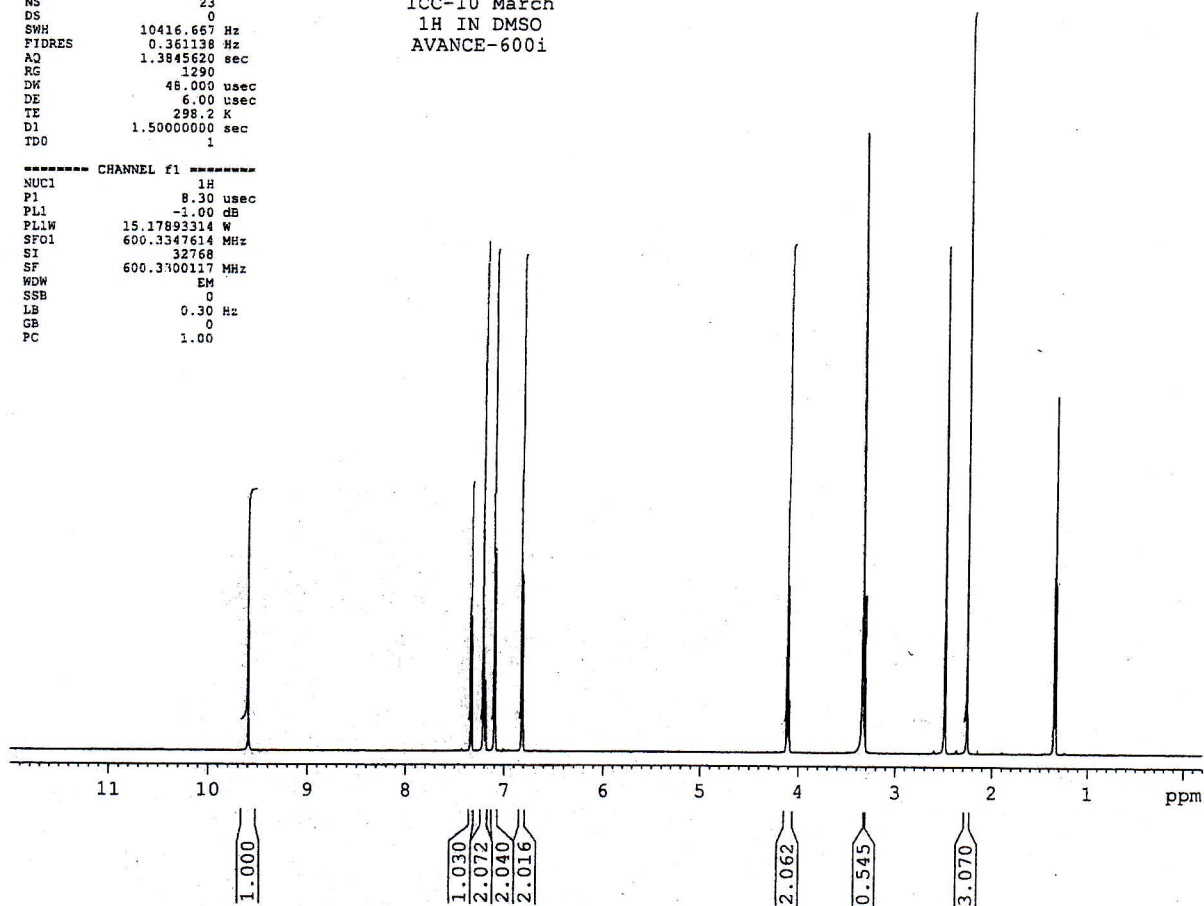
Lot No.: 000240



SOLVENT DMSO  
NS 23  
DS 0  
SWH 10416.667 Hz  
FIDRES 0.361138 Hz  
AQ 1.3845620 sec  
RG 1290  
DK 48.000 usec  
DE 6.00 usec  
TE 298.2 K  
D1 1.5000000 sec  
TDO 1

ICC-10 March  
1H IN DMSO  
AVANCE-600i

----- CHANNEL f1 -----  
NUC1 1H  
P1 8.30 usec  
PL1 -1.00 dB  
PLW 15.17893314 W  
SFO1 600.3347614 MHz  
SI 32768  
SF 600.3300117 MHz  
WDW EM  
SSB 0  
LB 0.30 Hz  
GB 0  
PC 1.00





# INDOFINE Chemical Company, Inc.

121 Stryker Lane, Bldg. 30, Suite 1 • Hillsborough, NJ 08844 • U.S.A.

Phone: (908) 359-6778 • FAX: (908) 359-1179

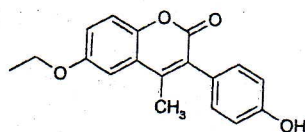
website: [www.indofinechemical.com](http://www.indofinechemical.com)

e-mail: [chemical@indofinechemical.com](mailto:chemical@indofinechemical.com)

Catalog No.: 19-254

Product name: 6-Ethoxy-3(4'-Hydroxyphenyl)-4-methylcoumarin

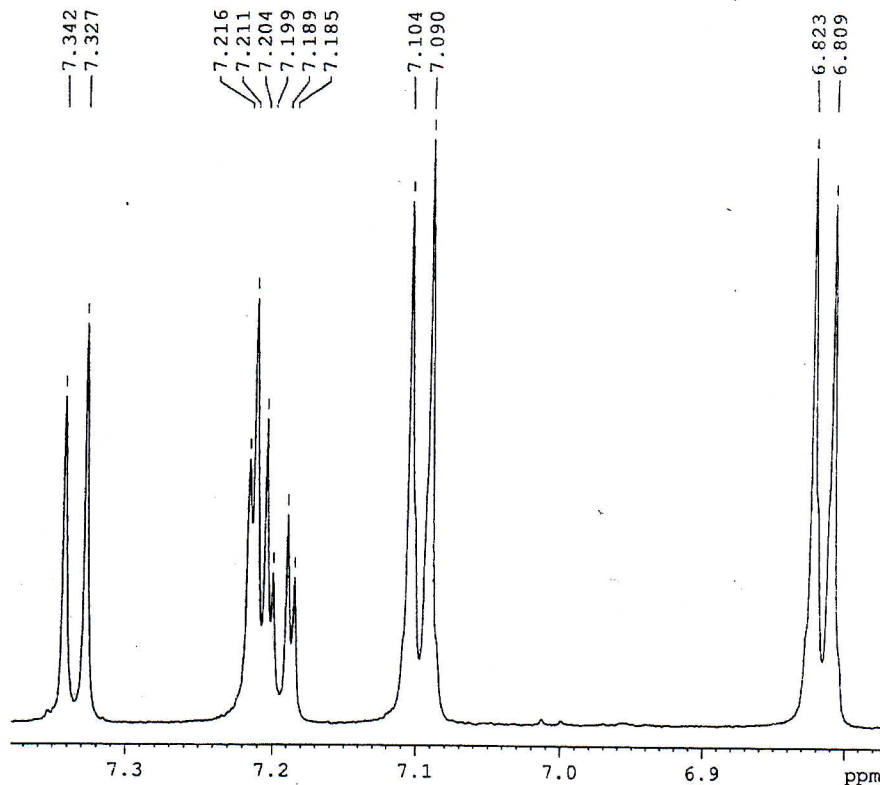
Lot No.: 000240



SOLVENT DMSO  
NS 23  
DS 0  
SWH 10416.667 Hz  
FIDRES 0.361138 Hz  
AQ 1.3845620 sec  
RG 1290  
DW 48.000 usec  
DE 8.00 usec  
TE 298.2 K  
D1 1.5000000 sec  
TD0 1

ICC-10 March  
1H IN DMSO  
AVANCE-600i

----- CHANNEL f1 -----  
NUC1 1H  
F1 8.30 usec  
PL1 -1.00 dB  
PL1W 15.17893314 W  
SFO1 600.3347614 MHz  
SI 32768  
SF 600.3300117 MHz  
WEM EM  
SSB 0  
LB 0.30 Hz  
GB 0  
PC 1.00





# INDOFINE Chemical Company, Inc.

121 Stryker Lane, Bldg. 30, Suite 1 • Hillsborough, NJ 08844 • U.S.A.

Phone: (908) 359-6778 • FAX: (908) 359-1179

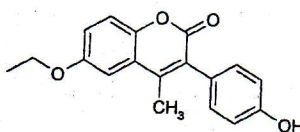
website: [www.indofinechemical.com](http://www.indofinechemical.com)

e-mail: [chemical@indofinechemical.com](mailto:chemical@indofinechemical.com)

Catalog No.: 19-254

Product name: 6-Ethoxy-3(4'-Hydroxyphenyl)-4-methylcoumarin

Lot No.: 000240



SOLVENT DMSO  
NS 23  
DS 0  
SWH 10416.667 Hz  
FIDRES 0.361138 Hz  
AQ 1.3845620 sec  
RG 1290  
DW 48.000 usec  
DE 6.00 usec  
TE 298.2 K  
DI 1.5000000 sec  
TDO 1

ICC-10 March  
1H IN DMSO  
AVANCE-600i

----- CHANNEL f1 -----  
NUC1 1H  
P1 8.30 usec  
PL1 -1.00 dB  
PL1W 15.17893314 W  
SFO1 600.3347614 MHz  
SI 32768  
SF 600.3300117 MHz  
WDW EM  
SSB 0  
LB 0.30 Hz  
GB 0  
PC 1.00

